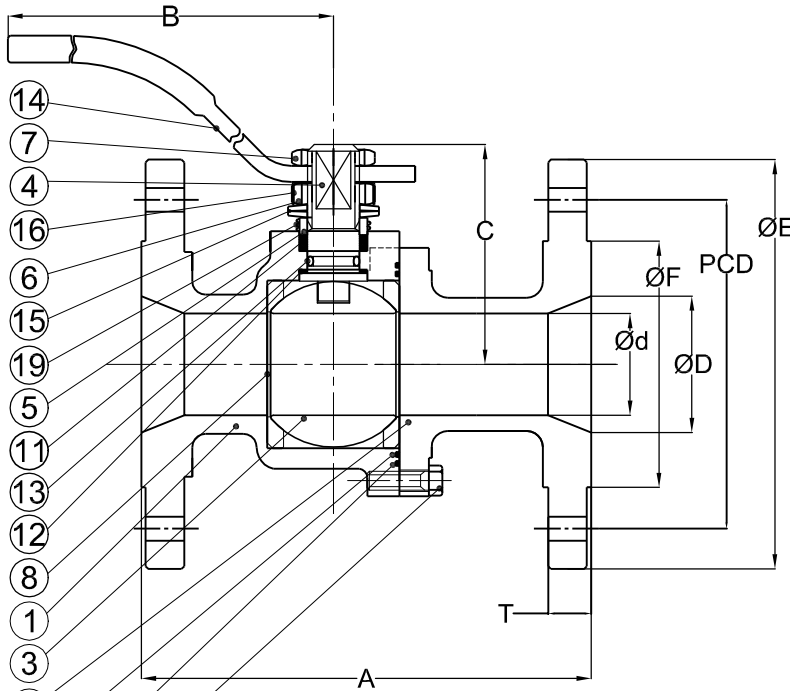


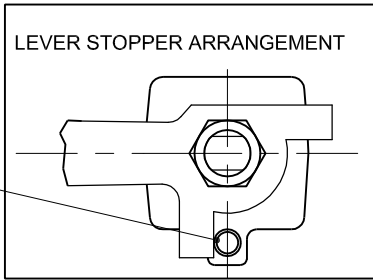
METFLOW CONTROLS PRIVATE LIMITED.



BALL VALVE TWO PIECE, REDUCED BORE	DATE	GA / SALES DRG.NO	REV. NO
	5 JUN. 2007	BV / GA / 01	00



PART NO.	PART NAME	MATERIAL OF CONSTRUCTION		
		WCB	CF8	CF8M
1	BODY	WCB	CF8	CF8M
2	END PIECE	WCB	CF8	CF8M
3	BALL	410	304	316
4	STEM	410	304	316
5	GLAND	410	304	316
6	GLAND NUT	304		
7	LEVER NUT	304		
8	SEAT	● PTFE/CFT/GFT		
9	BODY SEAL	PTFE		
10	BODY SEAL	GRAFOIL		
11	STEM SEAL	GRAFOIL		
12	STEM WASHER	25% GFT		
13	'O' RING	VITON		
14	LEVER	STEEL		
15	DISC SPRING	SPRING STEEL		
16	LOCK CLIP	304		
17	HEX SCREW	* ASTM A193 Gr.B8M		
18	STOPPER PIN	SS410/SS304		
19	ANTISTATIC SPRING	SS304		



NOTES:

- DIM. 'A' IS CONFORMS TO ASME B16.510/EN-558
- APPLICABLE ONLY FOR SIZES 15 TO 50MM
- LEVER WILL HAVE RED COLOURED PVC SLEEVE.
- RAISED FACE FLANGED ENDS AS PER ASME B 16.5.
- * ASTM A 193 Gr.B7
- FIRE SAFE TESTED AS PER API: 607 4th EDITION.
- PTFE FOR NON FIRE SAFE ONLY.

DESIGN STD : BS EN ISO 17292, TESTING STD : EN 12266-1

CLASS	150											
SIZE	A	B	C	Ø D	Ø d	E	F	T	PCD	HOLE DIA	NO.OF HOLES	WEIGHT Kgs
15	108	120	80	13	11	90	34.9	10	60.3	15.9	4	1.2
20	117	120	80	20	13	98.5	43	10.5	70	16	4	1.6
25	127	145	85	25	20	110	51	11.25	79.5	16	4	2.3
32	140	145	90	32	25	117.5	63.5	13	89	16	4	3.4
40	165	175	105	38	32	127	73	14.5	98.5	16	4	4.8
50	178	175	110	51	38	153	92	16	120.7	19.1	4	6.8

MATL.CODE	WCB	CA15	CF8	CF8M	WCB	410	304	316
MATL.SPECN.	ASTM A216	ASTM A217	ASTM A351	ASTM A351	ASTM A216	ASTM A276	ASTM A276	ASTM A276

TEST PRESSURES , Bar			
CLASS		150	300
HYD	SHELL	30	76
	SEAT	22	55
AIR	SEAT	6.9	

CUSTOMER: _____
 ORDER NO: _____
 JOB / PROJECT: _____

PREPARED BY: _____ CHECKED BY: _____ APPROVED BY: _____